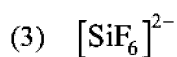
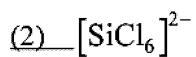
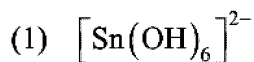


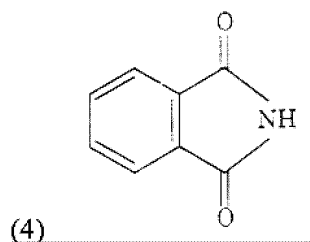
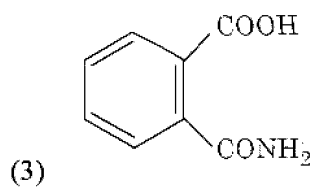
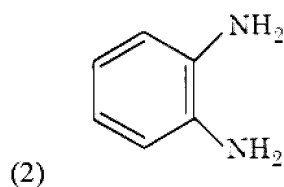
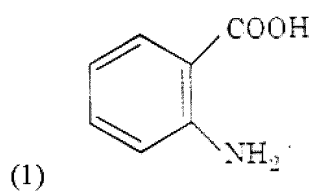
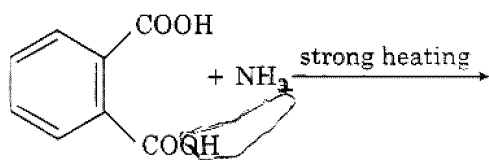
NEET PAPER – 2019 (S6 – CODE)

1. Which of the following species is not stable ?



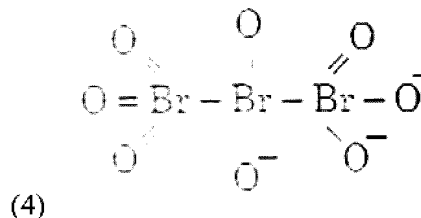
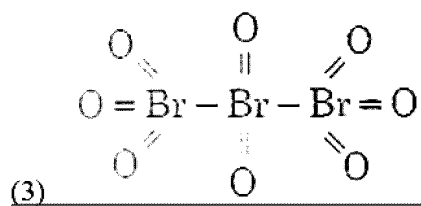
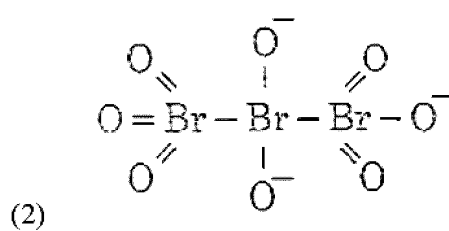
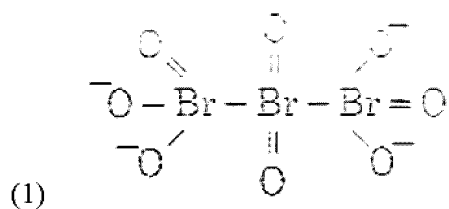
Ans. 2

2. The major product of the following reaction is



Ans. 4

3. The correct structure of tribromooxide is



Ans. 3

4. Under isothermal condition, a gas at 300K expands from 0.1 L to 0.25 L against a constant external pressure of 2 bar. The work done by the gas is (Given that 1 L bar = 100 J)

(1) 25 J

(2) 30 J

(3) -30 J

(4) 5 kJ

Ans. 3

5. A gas at 350 K and 15 bar has molar volume 20 percent smaller than that for an ideal gas under the same conditions. The correct option about the gas and its compressibility factor ( $Z$ ) is

- (1)  $Z < 1$  and attractive forces are dominant  
 (2)  $Z < 1$  and repulsive forces are dominant  
 (3)  $Z > 1$  and attractive forces are dominant  
 (4)  $Z > 1$  and repulsive forces are dominant

Ans. 2

6. A compound is formed by cation 'C' and anion 'A'. The anions form hexagonal close packed (hcp) lattice and the cations occupy 75% of octahedral voids. The formula of the compound is

- (1)  $C_3A_4$   
 (2)  $C_4A_3$   
 (3)  $C_2A_3$   
 (4)  $C_3A_2$

Ans. 1

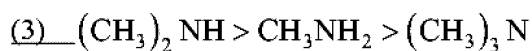
7. If the rate constant for a first order reaction is  $k$ , the time ( $t$ ) required for the completion of 99% of the reaction is given by

- (1)  $t = 4.606/k$   
 (2)  $t = 2.303/k$   
 (3)  $t = 0.693/k$   
 (4)  $t = 6.909/k$

Ans. 1

8. The correct order of the basic strength of methyl substituted amines in aqueous solution is

- (1)  $(CH_3)_3N > (CH_3)_2NH > CH_3NH_2$   
 (2)  $CH_3NH_2 > (CH_3)_2NH > (CH_3)_3N$



Ans. 3

9. For a cell involving one electron  $E_{cell}^- = 0.59V$  at 298 K, the equilibrium constant for the cell reaction is [Given that  $\frac{2.303RT}{F} = 0.059V$  at  $T = 298 K$ ]

- (1)  $1.0 \times 10^{10}$   
 (2)  $1.0 \times 10^{30}$   
 (3)  $1.0 \times 10^2$   
 (4)  $1.0 \times 10^5$

Ans. 1

10. Which of the following is incorrect statement ?

- (1)  $GeX_4$  ( $X = F, Cl, Br, I$ ) is more stable than  $GeX_2$   
 (2)  $SnF_4$  is ionic in nature  
 (3)  $PbF_4$  is covalent in nature  
 (4)  $SiCl_4$  is easily hydrolysed

Ans. 3

11. Match the Xenon compounds in Column – I with its structure in Column – II and assign the correct code

Column – I	Column – II
a) $XeF_4$	i) pyramidal
b) $XeF_6$	ii) square planar
c) $XeOF_4$	iii) distorted octahedral
d) $XeO_3$	iv) square pyramidal

Code

- |     |     |     |   |    |
|-----|-----|-----|---|----|
|     | a   | b   | c | d  |
| (1) | ii  | iii | i | iv |
| (2) | iii | iv  | i | ii |

(3) i ii iii iv

(4) ii iii iv i

Ans. 4

12. The number of moles of hydrogen molecules required to produce 20 moles of ammonia through Haber's process is

(1) 30

(2) 40

(3) 10

(4) 20

Ans. 1

13. The manganate and permanganate ions are tetrahedral, due to

(1) The  $\pi$  - bonding involves overlap of p - orbitals of oxygen with p - orbitals of manganese

(2) The  $\pi$  - bonding involves overlap of d - orbitals of oxygen with d - orbitals of manganese

(3) The  $\pi$  - bonding involves overlap of p - orbitals of oxygen with d - orbitals of manganese

(4) There is no  $\pi$  - bonding

Ans. 3

14. Enzymes that utilize ATP in phosphate transfer require an alkaline earth metal (M) as the cofactor. 'M' is

(1) Ca

(2) Sr

(3) Be

(4) Mg

Ans. 4

15. What is the correct electronic configuration of the central atom in  $K_4[Fe(CN)_6]$  based on crystal field theory ?

(1)  $e^3 t_2^3$

(2)  $e^4 t_2^2$

(3)  $t_{2g}^4 e_g^2$

(4)  $t_{2g}^6 e_g^0$

Ans. 4

16. Among the following, the one that is not a green house gas is

(1) ozone

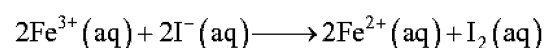
(2) sulphur dioxide

(3) nitrous oxide

(4) methane

Ans. 2

17. For the cell reaction



$E_{cell}^{-} = 0.24V$  at 298 K. The standard Gibbs energy ( $\Delta_r G^{-}$ ) of the cell reaction is [Given that Faraday constant  $F = 96500 C mol^{-1}$ ]

(1) 46.32 kJ mol<sup>-1</sup>

(2) 23.16 kJ mol<sup>-1</sup>

(3) -46.32 kJ mol<sup>-1</sup>

(4) -23.16 kJ mol<sup>-1</sup>

Ans. 3

18. Which mixture of the solutions will lead to the formation of negatively charged colloidal  $[AgI]I^{-}$  sol ?

(1) 50 mL of 2M  $AgNO_3$  + 50 mL of 1.5 M KI

(2) 50 mL of 0.1M  $AgNO_3$  + 50 mL of 0.1M KI

(3) 50 mL of 1M AgNO<sub>3</sub> + 50 mL of 1.5 M

KI

(4) 50 mL of 1M AgNO<sub>3</sub> + 50 mL of 2 M

KI

Ans. 3 & 4

19. Which one is malachite from the following ?

(1) Fe<sub>3</sub>O<sub>4</sub>

(2) CuCO<sub>3</sub>·Cu(OH)<sub>2</sub>

(3) CuFeS<sub>2</sub>

(4) Cu(OH)<sub>2</sub>

Ans. 2

20. Among the following, the narrow spectrum antibiotic is

(1) amoxicillin

(2) chloramphenicol

(3) penicillin G

(4) ampicillin

Ans. 3

21. Which of the following is an amphoteric hydroxide ?

(1) Mg(OH)<sub>2</sub>

(2) Be(OH)<sub>2</sub>

(3) Sr(OH)<sub>2</sub>

(4) Ca(OH)<sub>2</sub>

Ans. 2

22. The non – essential amino acid among the following is

(1) alanine

(2) lysine

(3) valine

(4) leucine

Ans. 1

23. Which of the following diatomic molecular species has only  $\pi$  bonds according to Molecular Orbital Theory ?

(1) C<sub>2</sub>

(2) Be<sub>2</sub>

(3) O<sub>2</sub>

(4) N<sub>2</sub>

Ans. 1

24. The biodegradable polymer is

(1) nylon – 6

(2) Buna – S

(3) nylon – 6, 6

(4) nylon 2 – nylon 6

Ans. 4

25. In which case change in entropy is negative ?

(1) Sublimation of solid to gas

(2) 2H(g)  $\longrightarrow$  H<sub>2</sub>(g)

(3) Evaporation of water

(4) Expansion of a gas at constant temperature

Ans. 2

26. The mixture that forms maximum boiling point azeotrope is

(1) Acetone + Carbon disulphide

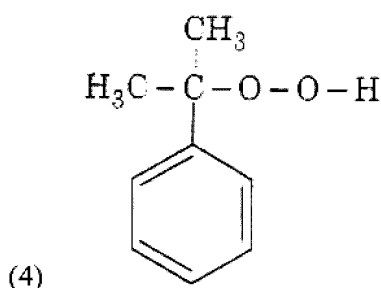
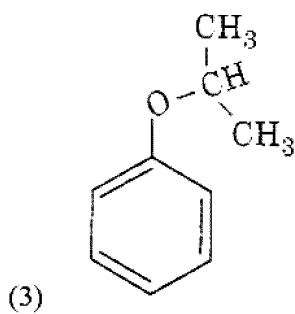
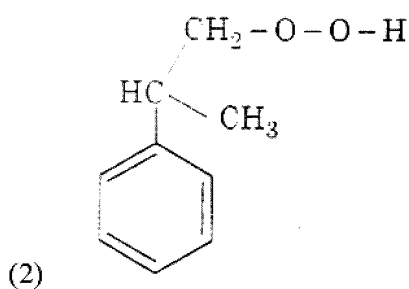
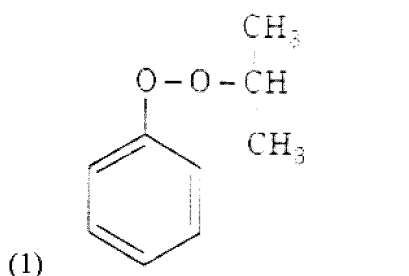
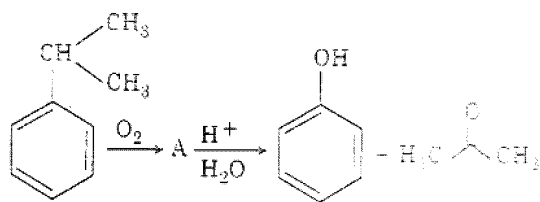
(2) Heptane + Octane

(3) Water + Nitric acid

(4) Ethanol + Water

Ans. 3

27. The structure of intermediate 'A' in the following reaction, is



Ans. 4

28. Match the following :

- |                     |                    |
|---------------------|--------------------|
| a) Pure nitrogen    | i) Chlorine        |
| b) Haber process    | ii) Sulphuric acid |
| 3) Contact process  | iii) Ammonia       |
| 4) Deacon's process | iv) Sodium azide   |

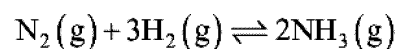
(or) Barium azide

Which of the following is the correct option ?

- |     |     |     |     |     |
|-----|-----|-----|-----|-----|
|     | (a) | (b) | (c) | (d) |
| (1) | iii | iv  | ii  | i   |
| (2) | iv  | iii | ii  | i   |
| (3) | i   | ii  | iii | iv  |
| (4) | ii  | iv  | i   | iii |

Ans. 2

29. For the chemical reaction



the correct option is

- (1)  $-\frac{d[\text{N}_2]}{dt} = \frac{1}{2} \frac{d[\text{NH}_3]}{dt}$
- (2)  $3 \frac{d[\text{H}_2]}{dt} = 2 \frac{d[\text{NH}_3]}{dt}$
- (3)  $-\frac{1}{3} \frac{d[\text{H}_2]}{dt} = -\frac{1}{2} \frac{d[\text{NH}_3]}{dt}$
- (4)  $-\frac{d[\text{N}_2]}{dt} = 2 \frac{d[\text{NH}_3]}{dt}$

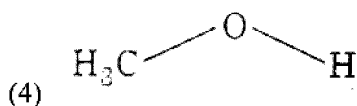
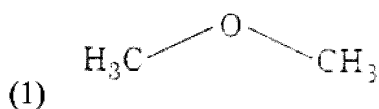
Ans. 1

30. Which will make basic buffer ?

- (1) 100 mL of 0.1 M HCl + 200 mL of 0.1M NH<sub>4</sub>OH
- (2) 100 mL of 0.1 M HCl + 100 mL of 0.1M NaOH
- (3) 50 mL of 0.1 M NaOH + 25 mL of 0.1 M CH<sub>3</sub>COOH
- (4) 100 mL of 0.1 M CH<sub>3</sub>COOH + 100 mL of 0.1 M NaOH

Ans. 1

31. The compound that is most difficult to protonate is



Ans. 2

32. Which of the following reactions are disproportionation reaction ?

- (a)  $2\text{Cu}^+ \rightarrow \text{Cu}^{2+} + \text{Cu}^0$   
 (b)  $3\text{MnO}_4^{2-} + 4\text{H}^+ \rightarrow 2\text{MnO}_4^- + \text{MnO}_2 + 2\text{H}_2\text{O}$   
 (c)  $2\text{KMnO}_4 \xrightarrow{\Delta} \text{K}_2\text{MnO}_4 + \text{MnO}_2 + \text{O}_2$   
 (d)  $2\text{MnO}_4^- + 3\text{Mn}^{2+} + 2\text{H}_2\text{O} \rightarrow 5\text{MnO}_2 + 4\text{H}^+$

Select the correct option from the following

- (1) a, c and d  
 (2) a and d only  
 (3) a and b only  
 (4) a, b and c

Ans. 3

33. Identify the incorrect statement related to  $\text{PCl}_5$  from the following

- (1) Axial P – Cl bonds are longer than equatorial P – Cl bonds  
 (2)  $\text{PCl}_5$  molecule is non – reactive  
 (3) Three equatorial P – Cl bonds makes an angle of  $120^\circ$  with each other  
 (4) Two axial P – Cl bonds make an angle of  $180^\circ$  with each other

Ans. 2

34. 4d, 5p, 5f and 6p orbitals are arranged in the order of decreasing energy. The correct option is

- (1)  $6p > 6f > 4d > 5p$   
 (2)  $5f > 6p > 4d > 5p$   
 (3)  $5f > 6p > 5p > 4d$   
 (4)  $6p > 5f > 5p < 4d$

Ans. 3

35. The number of sigma ( $\sigma$ ) and pi ( $\pi$ ) bonds in pent – 2 – en – 4 – yne is

- (1) 11  $\sigma$  bonds and 2  $\pi$  bonds  
 (2) 13  $\sigma$  bonds and no  $\pi$  bond  
 (3) 10  $\sigma$  bonds and 3  $\pi$  bonds  
 (4) 8  $\sigma$  bonds and 5  $\pi$  bonds

Ans. 3

36. Which is the correct thermal stability order for  $\text{H}_2\text{E}$  (E = O, S, Se, Te and Po) ?

- (1)  $\text{H}_2\text{Po} < \text{H}_2\text{Te} < \text{H}_2\text{Se} < \text{H}_2\text{S} < \text{H}_2\text{O}$   
 (2)  $\text{H}_2\text{Se} < \text{H}_2\text{Te} < \text{H}_2\text{Po} < \text{H}_2\text{O} < \text{H}_2\text{S}$   
 (3)  $\text{H}_2\text{S} < \text{H}_2\text{O} < \text{H}_2\text{Se} < \text{H}_2\text{Te} < \text{H}_2\text{Po}$   
 (4)  $\text{H}_2\text{O} < \text{H}_2\text{S} < \text{H}_2\text{Se} < \text{H}_2\text{Te} < \text{H}_2\text{Po}$

Ans. 1

37. Conjugate base for Bronsted acids  $\text{H}_2\text{O}$  and HF are

- (1)  $\text{OH}^-$  and  $\text{F}^-$ , respectively  
 (2)  $\text{H}_3\text{O}^+$  and  $\text{H}_2\text{F}^+$ , respectively  
 (3)  $\text{OH}^-$  and  $\text{H}_2\text{F}^+$ , respectively  
 (4)  $\text{H}_3\text{O}^+$  and  $\text{F}^-$ , respectively

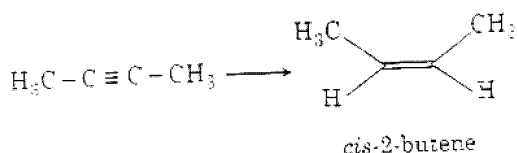
Ans. 1

38. Which of the following series of transitions in the spectrum of hydrogen atom falls in visible region ?

- (1) Paschen series
- (2) Brackett series
- (3) Lyman series
- (4) Balmer series

Ans. 4

39. The most suitable reagent for the following conversion, is



- (1) Zn/HCl
- (2)  $\text{Hg}^{2+}/\text{H}^+, \text{H}_2\text{O}$
- (3) Na/liquid  $\text{NH}_3$
- (4)  $\text{H}_2, \text{Pd/C}, \text{quinoline}$

Ans. 4

40. For the second period elements the correct increasing order of first ionization enthalpy is

- (1)  $\text{Li} < \text{B} < \text{Be} < \text{C} < \text{N} < \text{O} < \text{F} < \text{Ne}$
- (2)  $\text{Li} < \text{Be} < \text{B} < \text{C} < \text{O} < \text{N} < \text{F} < \text{Ne}$
- (3)  $\text{Li} < \text{Be} < \text{B} < \text{C} < \text{N} < \text{O} < \text{F} < \text{Ne}$
- (4)  $\text{Li} < \text{B} < \text{Be} < \text{C} < \text{O} < \text{N} < \text{F} < \text{Ne}$

Ans. 4

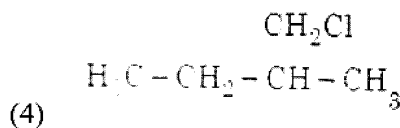
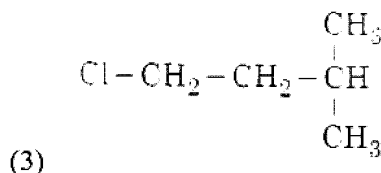
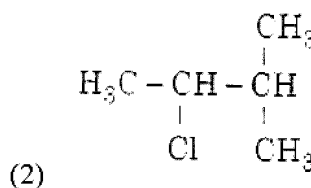
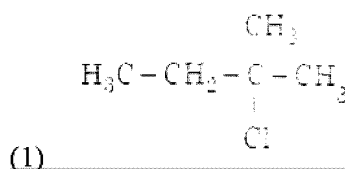
41. pH of a saturated solution of  $\text{Ca}(\text{OH})_2$  is 9.

The solubility product ( $K_{\text{sp}}$ ) of  $\text{Ca}(\text{OH})_2$  is

- (1)  $0.125 \times 10^{-15}$
- (2)  $0.5 \times 10^{-10}$
- (3)  $0.5 \times 10^{-15}$
- (4)  $0.25 \times 10^{-10}$

Ans. 3

42. An alkene 'A' on reaction with  $\text{O}_3$  and  $\text{Zn} - \text{H}_2\text{O}$  gives propanone and ethanol in equimolar ratio. Addition of HCl to alkene 'A' gives 'B' as the major product. The structure of product 'B' is



Ans. 1

43. The method used to remove temporary hardness of water is

- (1) Ion - exchange method
- (2) Synthetic resins method
- (3) Calgon's method
- (4) Clark's method

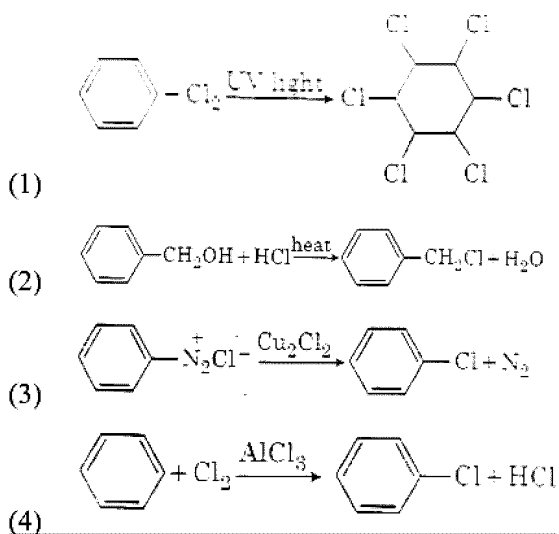
Ans. 4

44. For an ideal solution, the correct option is

- (1)  $\Delta_{\text{mix}} H = 0$  at constant T and P
- (2)  $\Delta_{\text{mix}} G = 0$  at constant T and P
- (3)  $\Delta_{\text{mix}} S = 0$  at constant T and P
- (4)  $\Delta_{\text{mix}} V \neq 0$  at constant T and P

Ans. 1

45. Among the following, the reaction that proceeds through an electrophilic substitution, is



Ans: 4

46. What is the site of perception of photoperiod necessary for induction of flowering in plants?

- (1) Shoot apex  
 (2) Leaves  
 (3) Lateral buds  
 (4) Pulvinus

Ans: 1

47. Match the following hormones with the respective disease:

- |                    |                         |
|--------------------|-------------------------|
| (a) Insulin        | (i) Addison's disease   |
| (b) Thyrosin       | (ii) Diabetes Insipidus |
| (c) Corticoids     | (iii) Acromegaly        |
| (d) Growth Hormone | (iv) Goitre             |
|                    | (v) Diabetes mellitus   |

Select the correct option

- (1) a - v, b - iv, c - i, d - iii  
 (2) a - ii, b - iv, c - i, d - iii  
 (3) a - v, b - i, c - ii, d - iii  
 (4) a - ii, b - iv, c - iii, d - i

Ans: 1

48. Use of an artificial kidney during hemodialysis may result in:

- (a) Nitrogenous waste build-up in the body  
 (b) Non-elimination of excess potassium ions  
 (c) Reduced absorption of calcium ions from gastro-intestinal tract  
 (d) Reduced RBC production

Which of the following options is the most appropriate? <http://www.xamstudy.com>

- (1) (c) and (d) are correct  
 (2) (a) and (d) are correct  
 (3) (a) and (b) are correct  
 (4) (b) and (c) are correct

Ans: 1

49. Which of the following ecological pyramids is generally inverted?

- (1) Pyramid of biomass in a forest  
 (2) Pyramid of biomass in a sea  
 (3) Pyramid of numbers in grassland  
 (4) Pyramid of energy

Ans: 2

50. Select the hormone-releasing Intra-Uterine Devices

- (1) Progestasert, LNG-20  
 (2) Lippes Loop, Multiload 375



- (3) Vaults, LNG-20
- (4) Multiload 375, Progestasert

Ans: 1

51. Respiratory Quotient (RQ) value of tripalmitin is:

- (1) 0.07
- (2) 0.09
- (3) 0.9
- (4) 0.7

Ans: 4

52. Which of the following statements regarding mitochondria is incorrect?

- (1) Inner membrane is convoluted with infoldings
- (2) Mitochondrial matrix contains single circular DNA molecule and ribosomes
- (3) Outer membrane is permeable to monomers of carbohydrates, fats and proteins
- (4) Enzymes of electron transport are embedded in outer membrane

Ans: 4

53. Which of the following can be used as a biocontrol agent in the treatment of plant disease?

- (1) Anabaena
- (2) Lactobacillus
- (3) Trichoderma
- (4) Chlorella

Ans: 3

54. Xylem translocates:

- (1) Water, mineral salts and some organic nitrogen only

(2) Water, mineral salts, some organic nitrogen and hormones

(3) Water only

(4) Water and mineral salts only

Ans: 2

55. Which one of the following equipments is essentially required for growing microbes on a large scale, for industrial production of enzymes?

(1) Industrial oven

(2) Bioreactor

(3) BOD incubator

(4) Sludge digester

Ans: 2

56. A gene locus has two alleles A, a. If the frequency of dominant allele A is 0.4, then what will be the frequency of homozygous dominant, heterozygous and homozygous recessive individuals in the population?

(1) 0.16 (AA); 0.48 (Aa); 0.36 (aa)

(2) 0.16 (AA); 0.36 (Aa); 0.48 (aa)

(3) 0.36 (AA); 0.48 (Aa); 0.16 (aa)

(4) 0.16 (AA); 0.24 (Aa); 0.36 (aa)

Ans: 1

57. Expressed Sequence Tags (ESTs) refers to:

(1) DNA polymorphism

(2) Novel DNA sequences

(3) Genes expressed as RNA

(4) Polypeptide expression

Ans: 3

58. Which of the following sexually transmitted diseases is not completely curable?

- (1) Genital herpes
- (2) Chlamydiasis
- (3) Gonorrhoea
- (4) Genital warts

Ans: 1

59. DNA precipitation out of a mixture of biomolecules can be achieved by treatment with

- (1) Methanol at room temperature
- (2) Chilled chloroform
- (3) Isopropanol
- (4) Chilled ethanol

Ans: 4

60. Which of the following immune responses is responsible for rejection of kidney graft?

- (1) Inflammatory immune response
- (2) Cell-mediated immune response
- (3) Auto-immune response
- (4) Humoral immune response

Ans: 2

61. Variations caused by mutation, as proposed by Hugo de Vries, are:

- (1) small and directional
- (2) small and directionless
- (3) random and directional
- (4) random and directionless

Ans: 4

62. Which of the following statements is not correct?

- (1) Lysosomes are membrane bound structures
- (2) Lysosomes are formed by the process of packaging in the endoplasmic reticulum

(3) Lysosomes have numerous hydrolytic enzymes

(4) The hydrolytic enzymes of lysosomes are active under acidic pH

Ans: 2

63. Which of the following statements is incorrect?

- (1) Conidia are produced exogenously and ascospores endogenously
- (2) Yeasts have filamentous bodies with long thread-like hyphae
- (3) Morels and truffles are edible delicacies
- (4) Calyceps is a source of many alkaloids and LSD

Ans: 2

64. Identify the correct pair representing the causative agent of typhoid fever and the confirmatory test for typhoid

- (1) Salmonella typhi / Anthrone test
- (2) Salmonella typhi / Widal test
- (3) Plasmodium vivax / UTI test
- (4) Streptococcus pneumoniae/ Widal test

Ans: 2

65. What is the genetic disorder in which an individual has an overall masculine development, gynaecomastia, and is sterile?

- (1) Edward syndrome
- (2) Down's syndrome
- (3) Turner's syndrome
- (4) Klinefelter's syndrome

Ans: 4

66. Match the Column-I with Column-II

Column – I	Column – II
(a) P-wave	(i) Depolarisation of ventricles
(b) QRS complex	(ii) Repolarisation of ventricles
(c) T-wave	(iii) Coronary ischemia
(d) Reduction in the size of T-wave	(iv) Depolarisation of atria
	(v) Repolarisation of atria

Select the correct option

- (1) a – ii, b – i, c – v, d – iii
- (2) a – ii, b – iii, c – v, d – iv
- (3) a – iv, b – i, c – ii, d – iii
- (4) a – iv, b – i, c – ii, d – v

Ans: 3

67. Which of the following glucose transporters is insulin-dependent?

- (1) GLUT III
- (2) GLUT IV
- (3) GLUT I
- (4) GLUT II

Ans: 2

68. Identify the cells whose secretion protects the lining of gastro-intestinal tract from various enzymes:

- (1) Oxyntic Cells
- (2) Duodenal Cells
- (3) Chief cells
- (4) Goblet Cells

Ans: 4

69. Which one of the following statements regarding post-fertilization development in flowering plants is incorrect?

- (1) Central cell develops into endosperm
- (2) Ovules develop into embryo sac
- (3) Ovary develops into fruit
- (4) Zygote develops into embryo

Ans: 2

70. The correct sequence of phases of cell cycle is:

- (1)  $S \rightarrow G_1 \rightarrow G_2 \rightarrow M$
- (2)  $G_1 \rightarrow S \rightarrow G_2 \rightarrow M$
- (3)  $M \rightarrow G_1 \rightarrow G_2 \rightarrow S$
- (4)  $G_1 \rightarrow G_2 \rightarrow S \rightarrow M$

Ans: 2

71. The concept of “Omnis cellula-e cellula” regarding cell division was first proposed by:

- (1) Schleiden
- (2) Aristotle
- (3) Rudolf Virchow
- (4) Theodore Schwann

Ans: 3

72. What triggers activation of protoxin to active Bt toxin of *Bacillus thuringiensis* in boll worm?

- (1) Alkaline pH of gut
- (2) Acidic pH of stomach
- (3) Body temperature
- (4) Moist surface of midgut

Ans: 1

73. Concanavalin A is:

- (1) a lectin

- (2) a pigment
- (3) an alkaloid
- (4) an essential oil

Ans: 1

74. Select the correct sequence for transport of sperm cells in male reproductive system

- (1) Seminiferous tubules→Vasa efferentia→Epididymis→Inguinal canal→Urethra
- (2) Testis Epididymis→Vasa efferentia→Vas deferens→Ejaculatory duct→Inguinal canal→Urethra→Urethral meatus
- (3) Testis→Epididymis→Vasa efferentia→Rete testis→Inguinal canal→Urethra
- (4) Seminiferous tubules→Rete testis→Vasa efferentia→Epididymis→Vas deferens→Ejaculatory duct→Urethra→Urethral meatus

Ans: 4

75. Which of the following statements is correct?

- (1) Cornea is convex, transparent layer which is highly vascularised
- (2) Cornea consists of dense matrix of collagen and is the most sensitive portion of the eye
- (3) Cornea is an external, transparent and protective proteinacious covering of the eye-ball
- (4) Cornea consists of dense connective tissue of elastin and can repair itself

Ans: 3

76. Durg called 'Heroin' is synthesized by:

- (1) glycosylation of morphine
- (2) nitration of morphine
- (3) methylation of morphine
- (4) acetylation of morphine

Ans: 4

77. Under which of the following conditions will there be no change in the reading frame of following mRNA?

5' AACAGCGGUGCUAUU 3'

- (1) Insertion of A and G at 4<sup>th</sup> and 5<sup>th</sup> positions respectively
- (2) Deletion of GGU from 7<sup>th</sup>, 8<sup>th</sup> and 9<sup>th</sup> positions
- (3) Insertion of G at 5<sup>th</sup> position
- (4) Deletion of G from 5<sup>th</sup> position

Ans: 2

78. Which of the following is true for Golden rice?

- (1) It is drought tolerant, developed using Agrobacterium vector
- (2) It has yellow grains, because of a gene introduced from a primitive variety of rice
- (3) It is Vitamin A enriched, with a gene from daffodil
- (4) It is pest resistant, with a gene from Bacillus thuringiensis

Ans: 3

79. The ciliated epithelial cells are required to move particles or mucus in a specific direction. In humans, these cells are mainly present in:

- (1) Eustachian tube and Salivary duct
- (2) Bronchioles and Fallopian tubes
- (3) Bile duct and Bronchioles
- (4) Fallopian tubes and Pancreatic duct

Ans: 2

80. Phloem in gymnosperms lacks:

- (1) Companion cells only
- (2) Both sieve tubes and companion cells
- (3) Albuminous cells and sieve cells
- (4) Sieve tubes only

Ans: 2

81. Grass leaves curl inwards during very dry weather. Select the most appropriate reason from the following:

- (1) Shrinkage of air spaces in spongy mesophyll
- (2) Tyloses in vessels
- (3) Closure of stomata
- (4) Flaccidity of bulliform cells

Ans: 4

82. Tidal Volume and Expiratory Reserve Volume of an athlete is 500 mL and 1000 mL respectively. What will be his Expiratory Capacity if the Residual Volume is 1200 mL?

- (1) 2200 mL
- (2) 2700 mL
- (3) 1500 mL
- (4) 1700 mL

Ans: 3

83. Select the correct sequence of organs in the alimentary canal of cockroach starting from mouth:

- (1) Pharynx→Oesophagus→Gizzard→Ileum→Crop→Colon→Rectum
- (2) Pharynx→Oesophagus→Ileum→Gizzard→Colon→Rectum
- (3) Pharynx→Oesophagus→Crop→Gizzard→Ileum→Colon→Rectum
- (4) Pharynx→Oesophagus→Gizzard→Crop→Ileum→Colon→Rectum

Ans: 3

84. Select the incorrect statement:

- (1) Inbreeding selects harmful recessive genes that reduce fertility and productivity
- (2) Inbreeding helps in accumulation of superior genes and elimination of undesirable genes
- (3) Inbreeding increases homozygosity
- (4) Inbreeding is essential to evolve purelines in any animal

Ans: 1

85. Select the correct group of biocontrol agents.

- (1) Oscillatoria, Rhizobium, Trichoderma
- (2) Nostoc, Azospirillum, Nucleopolyhedrovirus
- (3) Bacillus thuringiensis, Tobacco mosaic virus, Aphids
- (4) Trichoderma, Baculovirus, Bacillus thuringiensis

Ans: 4

86. Thiobacillus is a group of bacteria helpful in carrying out:

- (1) Nitrification
- (2) Denitrification
- (3) Nitrogen fixation
- (4) Chemoautotrophic fixation

Ans: 2

87. Which of the statements given below is not true about formation of Annual Rings in trees?

- (1) Activity of cambium depends upon variation in climate
- (2) Annual rings are not prominent in trees of temperate region
- (3) Annual ring is a combination of spring wood and autumn wood produced in a year
- (4) Differential activity of cambium causes light and dark bands of tissue – early and late wood respectively

Ans: 2

88. It takes very long time for pineapple plants to produce flowers. Which combination of hormones can be applied to artificially induce flowering in pineapple plants throughout the year to increase yield?

- (1) Gibberellin and Abscisic acid
- (2) Cytokinin and Abscisic acid
- (3) Auxin and Ethylene
- (4) Gibberellin and Cytokinin

Ans: 3

89. Polyblend, a fine powder of recycled modified plastic, has proved to be a good material for:

- (1) construction of roads
- (2) making tubes and pipes
- (3) making plastic sacks
- (4) use as a fertilizer

Ans: 1

90. The shorter and longer arms of a submetacentric chromosome are referred to as:

- (1) q-arm and p-arm respectively
- (2) m-arm and n-arm respectively
- (3) s-arm and l-arm respectively
- (4) p-arm and q-arm respectively

Ans: 4

91. Which of the following statements is incorrect?

- (1) Infective constituent in viruses is the protein coat
- (2) Prions consist of abnormally folded proteins
- (3) Viroids lack a protein coat
- (4) Viruses are obligate parasites

Ans: 1

92. Conversion of glucose to glucose-6-phosphate, the first irreversible reaction of glycolysis, is catalysed by:

- (1) Enolase
- (2) Phosphofructokinase
- (3) Aldolase
- (4) Hexokinase

Ans: 4

93. Select the correctly written scientific name of Mango which was first described by Carolus Linnaeus:

- (1) Mangifera indica
- (2) Mangifera Indica
- (3) Mangifera indica Car. Linn
- (4) Mangifera indica Linn

Ans: 4

94. Persistent nucellus in the seed is known as:

- (1) Hilum
- (2) Tegmen
- (3) Chalaza
- (4) Perisperm

Ans: 4

95. Placentation, in which ovules develop on the inner wall of the ovary or in peripheral part, is:

- (1) Parietal
- (2) Free central
- (3) Basal
- (4) Axile

Ans: 1

96. Match the following organisms with their respective characteristics:

- |                   |                         |
|-------------------|-------------------------|
| (a) Pila          | (i) Flame cells         |
| (b) Bombyx        | (ii) Comb plates        |
| (c) Pleurobranchi | (iii) Radula            |
| (d) Taenia        | (iv) Malpighian tubules |

- (1) a – ii, b – iv, c – iii, d – i
- (2) a – iii, b – ii, c – iv, d – i
- (3) a – iii, b – ii, c – i, d – iv
- (4) a – iii, b – iv, c – ii, d – i

Ans: 4

97. Which of these following methods is the most suitable for disposal of nuclear waste?

- (1) Dump the waste within rocks under deep ocean
- (2) Bury the waste within rocks deep below the Earth's surface
- (3) Shoot the waste into space
- (4) Bury the waste under Antarctic ice-cover

Ans: 2

98. In some plants, the female gamete develops into embryo without fertilization. This phenomenon is known as:

- (1) Syngamy
- (2) Parthenogenesis
- (3) Autogamy
- (4) Parthenocarpy

Ans: 2

99. Cells in G<sub>0</sub> phase:

- (1) suspend the cell cycle
- (2) terminate the cell cycle
- (3) exit the cell cycle
- (4) enter the cell cycle

Ans: 3

100. Select the correct option:

- (1) Each rib is a flat thin bone and all the ribs are connected dorsally to the thoracic vertebrae and ventrally to the sternum

(2) There are seven pairs of vertebrosteral, three pairs of vertebrochondal and two pairs of vertebral ribs

(3) 8<sup>th</sup>, 9<sup>th</sup> and 10<sup>th</sup> pairs of ribs articulate directly with the sternum

(4) 11<sup>th</sup> and 12<sup>th</sup> pairs of ribs are connected to the sternum with the help of hyaline cartilage

Ans: 2

101. Match the hominids with their correct brain size:

(a) Homo habilis (i) 900 cc

(b) Homo neanderthalensis (ii) 1350 cc

(c) Homo erectus (iii) 650-800 cc

(d) Homo sapiens (iv) 1400 cc

Select the correct option

(1) a – iii, b – iv, c – i, d – ii

(2) a – iv, b – iii, c – i, d – ii

(3) a – iii, b – i, c – iv, d – ii

(4) a – iii, b – ii, c – i, d – iv

Ans: 1

102. The frequency of recombination between gene pairs on the same chromosome as a measure of the distance between genes was explained by:

(1) Alfred Sturtevant

(2) T.H. Morgan

(3) Gregor J. Mendel

(4) Boveri

Ans: 1

103. Colostrum, the yellowish fluid, secreted by mother during the initial days of lactation is very essential to impart immunity to the new born infants because it contains:

(1) Macrophages

(2) Immunoglobulin A

(3) Natural killer cells

(4) Monocytes

Ans: 2

104. Which of the following factors is responsible for the formation of concentrated urine?

(1) Secretion of erythropoietin by Juxtaglomerular complex

(2) Hydrostatic pressure during glomerular filtration

(3) Low levels of antidiuretic hormone

(4) Maintaining hyperosmolarity towards inner medially interstitium in the kidneys

Ans: 4

105. Which of the following protocols did aim for reducing emission of chlorofluorocarbons into the atmosphere?

(1) Gothenburg Protocol

(2) Geneva Protocol

(3) Montreal Protocol

(4) Kyoto Protocol

Ans: 3

106. Match the following genes of the Lac operon with their respective products:

(a) i gene (i)  $\alpha$ -galactosidase

(b) z gene (ii) Permease

(c) a gene (iii) Repressor



(d) y gene (iv) Transacetylase

Select the correct option

- (1) a – iii, b – i, c – iv, d – ii
- (2) a – iii, b – iv, c – i, d – ii
- (3) a – i, b – iii, c – ii, d – iv
- (4) a – iii, b – i, c – ii, d – iv

Ans: 1

107. Purines found both in DNA and RNA are:

- (1) Guanine and cytosine
- (2) Cytosine and thymine
- (3) Adenine and thymine
- (4) Adenine and guanine

Ans: 4

108. What would be the heart rate of a person if the cardiac outputs is 5L, blood volume in the ventricles at the end of diastole is 100 mL and at the end of ventricular systole is 50 mL? <http://www.xamstudy.com>

- (1) 100 beats per minute
- (2) 125 beats per minute
- (3) 50 beats per minute
- (4) 75 beats per minute

Ans: 1

109. Following statements describe the characteristics of the enzyme Restriction Endonuclease. Identify the incorrect statement

- (1) The enzyme cuts the sugar-phosphate backbone at specific sites on each strand
- (2) The enzyme recognize a specific palindromic nucleotide sequence in the DNA

(3) The enzyme cuts DNA molecular at identified position within the DNA

(4) The enzyme binds DNA at specific sites and cuts only one of the two strands

Ans: 4

110. Which of the following features of genetic code does allow bacteria to produce human insulin by recombinant DNA technology?

- (1) Genetic code is nearly universal
- (2) Genetic code is specific
- (3) Genetic code is not ambiguous
- (4) Genetic code is redundant

Ans: 1

111. Match the following structures with their respective location in organs:

- (a) Crypts of Lieberkuhn (i) Pancrease
- (b) Glisson's Capsule (ii) Dudenum
- (c) Islets of Langerhams (iii) Small intestine
- (d) Brunner's Glands (iv) Liver

Select the correct option from the following:

- (1) a – iii, b – iv, c – i, d – ii
- (2) a – iii, b – ii, c – i, d – iv
- (3) a – iii, b – i, c – ii, d – iv
- (4) a – ii, b – iv, c – i, d – iii

Ans: 1

112. Which of the following pairs of gases is mainly responsible for gree house effect?

- (1) Nitrogen and Sulphur dioxide
- (2) Carbon dioxide and Methane
- (3) Ozone and Ammonia
- (4) Oxygen and Nitrogen

Ans: 2

113. What is the direction of movement of sugars in phloem?

- (1) Downward
- (2) Bi-directional
- (3) Non-multidirectional
- (4) Upward

Ans: 2

114. In *Antirrhinum* (Snapdragon) a red flower was crossed with a white flower and in  $F_1$  generation, pink flowers were obtained. When pink flowers were selfed, the  $F_2$  generation showed white, red and pink flowers. Choose the incorrect statement from the following :

- (1) Ratio of  $F_2$  is 1/4 (Red): 2/4 (Pink): 1/4 (White)
- (2) Law of Segregation does not apply in this experiment
- (3) This experiment does not follow the Principle of Dominance
- (4) Pink colour in  $F_1$  is due to incomplete dominance

Ans: 2

115. Consider the following statements:

- (A) Coenzyme or metal ion that is tightly bound to enzyme protein is called prosthetic group
- (B) A complete catalytic active enzyme with its bound prosthetic group is called apoenzyme

Select the correct option

- (1) Both (A) and (B) are false
- (2) (A) is false but (B) is true

- (3) Both (A) and (B) are true
- (4) (A) is true but (B) is false

Ans: 1

116. Extrusion of second polar body from egg nucleus occurs:

- (1) before entry of sperm into ovum
- (2) simultaneously with first cleavage
- (3) after entry of sperm but before fertilization
- (4) after fertilization

Ans: 3

117. Which of the following contraceptive methods do involve a role of hormone?

- (1) CuT, Pills, Emergency contraceptive
- (2) Pills, Emergency contraceptives, Barrier methods
- (3) Lactational amenorrhoea, Pills, Emergency contraceptives
- (4) Barrier method, Lactational amenorrhoea, Pills

Ans: 3

118. Consider the following features:

- (a) Organ system level of organization
- (b) Bilateral symmetry
- (c) True coelomates with segmentation of body

Select the correct option of animal groups which possess all the above characteristics.

- (1) Arthropoda, Mollusca and Chordata
- (2) Annelida, Mollusca and Chordata
- (3) Annelida, Arthropoda and Chordata
- (4) Annelida, Arthropoda and Mollusca

Ans: 3

119. Which one of the following is not a method of in situ conservation of biodiversity?

- (1) Botanical Garden
- (2) Sacred Grove
- (3) Biosphere Reserve
- (4) Wildlife Sanctuary

Ans: 1

120. What map unit (Centimorgan) is adopted in the construction of genetic maps?

- (1) A unit of distance between genes on chromosomes, representing 1% cross over
- (2) A unit of distance between genes on chromosomes, representing 50% cross over
- (3) A unit of distance between two expressed genes, representing 10% cross over
- (4) A unit of distance between two expressed genes, representing 100% cross over

Ans: 1

121. What is the fate of the male gametes discharged in the synergid?

- (1) One fuses with the egg, other(s) fuse(s) with synergid nucleus
- (2) One fuses with the egg and other fuses with central cell nuclei
- (3) One fuses with the egg, other(s) degenerate(s) in the synergid
- (4) All fuse with the egg

Ans: 2

122. Which of the following muscular disorders is inherited?

- (1) Myasthenia gravis

(2) Botulism

(3) Tetany

(4) Muscular dystrophy

Ans: 4

123. Which of the following is a commercial blood cholesterol lowering agent?

- (1) Streptokinase
- (2) Lipase
- (3) Cyclosporin A
- (4) Statin

Ans: 4

124. Which of the following is the most important cause for animals and plants being driven to extinction?

- (1) Economic exploitation
- (2) Alien species invasion
- (3) Habitat loss and fragmentation
- (4) Drought and floods

Ans: 3

125. The Earth Summit held in Rio de Janeiro in 1992 was called:

- (1) to assess threat posed to native species by invasive weed species
- (2) for immediate steps to discontinue use of CFCs that were damaging the ozone layer
- (3) to reduce CO<sub>2</sub> emissions and global warming
- (4) for conservation of biodiversity and sustainable utilization of its benefits

Ans: 4

126. How does steroid hormone influence the cellular activities?

- (1) Activating cyclic AMP located on the cell membrane
- (2) Using aquaporin channels as second messenger
- (3) Changing the permeability of the cell membrane
- (4) Binding to DNA and forming a gene-hormone complex

Ans: 4

127. Which part of the brain is responsible for thermoregulation?

- (1) Corpus callosum
- (2) Medulla oblongata
- (3) Cerebrum
- (4) Hypothalamus

Ans. 4

128. Select the incorrect statement

- (1) In domesticated fowls, sex of progeny depends on the type of sperm rather than egg
- (2) Human males have one of their sex-chromosome much shorter than the other
- (3) Male fruit fly is heterogametic
- (4) In male grasshoppers, 50% of sperms have no sex-chromosomes

Ans. 1

129. Match the following organism with the products they produce

- |                              |                   |
|------------------------------|-------------------|
| (a) Lactobacillus            | (i) Cheese        |
| (b) Saccharomyces cerevisiae | (ii) Curd         |
| (c) Aspergillus niger        | (iii) Citric acid |

- (d) Acetobacter aceti
- (iv) Bread
- (v) Acetic acid

Select the correct option

- (1) a – iii, b – iv, c – iv, d - i
- (2) a – ii, b – i, c – iii, d – v
- (3) a – ii, b – iv, c – v, d – iii
- (4) a – ii, b – iv, c – iii, d – v

Ans. 4

130. Match Column-I with Column-II

- | Column – I     | Column – II   |
|----------------|---|
| (a) Saprophyte | (i) Symbiotic association of fungi with plant roots |
| (b) Parasite   | (ii) Decomposition of dead organic materials        |
| (c) Lichens    | (iii) Living on living plants of animals            |
| (d) Mycorrhiza | (iv) Symbiotic association of algae and fungi       |

Choose the correct answer from the options given below:

- (1) a – ii, b – i, c – iii, d – iv
- (2) a – ii, b – iii, c – iv, d – i
- (3) a – i, b – ii, c – iii, d – iv
- (4) a – iii, b – ii, c – i, d – iv

Ans. 2

131. Pinus seed cannot germinate and establish without fungi association. This is because:

- (1) It has very hard seed coat

(2) Its seeds contain inhibitors that prevent germination

(3) Its embryo is immature

(4) It has obligate association with mycorrhizae

Ans. 4

132. Which of the following pair of organelles does not contain DNA?

(1) Lysosomes and Vacuoles

(2) Nuclear envelope and Mitochondria

(3) Mitochondria and Lysosomes

(4) Chloroplast and Vacuoles

Ans. 1

133. In a species, the weight of new born ranges from 2 to 5 kg. 97% of the new born with an average weight between 3 to 3.3 kg survive whereas 99% of the infants born with weights from 2 to 2.5 kg or 4.5 to 5 kg die. Which type of selection process is taking place?

(1) Disruptive Selection

(2) Cyclical Selection

(3) Directional Selection

(4) Stabilizing Selection

Ans. 4

134. Due to increasing air – borne allergens and pollutants, many people in urban areas are suffering from respiratory disorder causing wheezing due to

(1) proliferation of fibrous tissues and damage of the alveolar walls

(2) reduction in the secretion of surfactants by pneumocytes

(3) benign growth on mucous lining of nasal cavity

(4) inflammation of bronchi and bronchioles

Ans. 4

135. From evolutionary point of view, retention of the female gametophyte with developing young embryo on the parent sporophyte for some time, is observed in

(1) Pteridophytes

(2) Gymnosperms

(3) Liverworts

(4) Mosses

Ans. 1

136. In which of the following processes, heat is neither absorbed nor released by a system?

(1) Isobaric

(2) Isochoric

(3) Isothermal

(4) Adiabatic

Ans. 4

137. Two point charges A and B, having charges + Q and -Q respectively, are placed at certain distance apart and force acting between them is F. If 25% charge of A is transferred to B, then force between the charges becomes

(1)  $\frac{16F}{9}$

(2)  $\frac{4F}{3}$

(3) F

(4)  $\frac{9F}{16}$

Ans. 4

138. A hollow metal sphere of radius  $R$  is uniformly charged. The electric field due to the sphere at a distance  $r$  from the centre:

- (1) Zero as  $r$  increases for  $r < R$ , increases as  $r$  increases for  $r > R$
- (2) Decreases as  $r$  increases for  $r < R$  and for  $r > R$
- (3) Increases as  $r$  increases for  $r < R$  and for  $r > R$
- (4) Zero as  $r$  increases for  $r < R$ , decreases as  $r$  increases for  $r > R$

Ans. 4

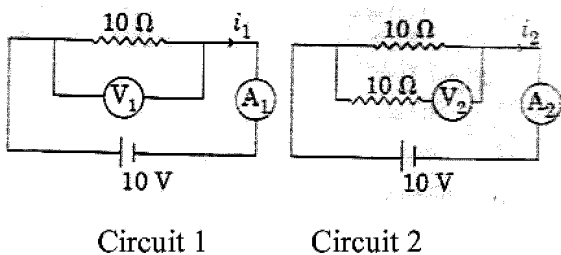
139. In an experiment the percentage of error occurred in the measurement of physical quantities  $A, B, C$  and  $D$  are 1%, 2%, 3% and 4% respectively. Then the maximum percentage of error in the measurement  $X$ ,

where  $X = \frac{A^2 B^{1/2}}{C^{1/3} D^3}$ , will be

- (1) -10%
- (2) 10%
- (3)  $\left(\frac{3}{13}\right)\%$
- (4) 16%

Ans. 4

140. In the circuits shown below, the readings of the voltmeters and the ammeters will be:



Circuit 1

Circuit 2

- (1)  $V_1 = V_2$  and  $i_1 = i_2$
- (2)  $V_2 > V_1$  and  $i_1 > i_2$
- (3)  $V_2 > V_1$  and  $i_1 = i_2$
- (4)  $V_1 = V_2$  and  $i_1 > i_2$

Ans. 1

141. A force  $F = 20 + 10y$  acts on a particle in  $y$ -direction where  $F$  is in newton and  $y$  in meter. Work done by this force to move the particle from  $y = 0$  to  $y = 1$  m is

- (1) 25 J
- (2) 20 J
- (3) 30 J
- (4) 5 J

Ans. 1

142. At a point  $A$  on the earth's surface the angle of dip,  $\delta = +25^\circ$ . At a point  $B$  on the earth's surface the angle of dip,  $\delta = -25^\circ$ . We can interpret that :

- (1)  $A$  is located in the northern hemisphere and  $B$  is located in the southern hemisphere
- (2)  $A$  and  $B$  are both located in the southern hemisphere.
- (3)  $A$  and  $B$  are both located in the northern hemisphere
- (4)  $A$  is located in the southern hemisphere and  $B$  is located in the northern hemisphere.

Ans. 4

143. Body A of mass  $4m$  moving with speed  $u$  collides with another body B of mass  $2m$ , at rest. The collision is head on and elastic in nature. After the collision the fraction of energy lost of the colliding body A is:

(1)  $\frac{4}{9}$

(2)  $\frac{5}{9}$

(3)  $\frac{1}{9}$

(4)  $\frac{8}{9}$

Ans. 4

144. Increases in temperature of a gas filled in a container would lead to :

- (1) Decrease in its pressure
- (2) Decrease in intermolecular distance
- (3) Increase in its mass
- (4) Increases in its kinetic energy

Ans. 4

145. Which of the following acts as a circuit protection device?

- (1) Switch
- (2) Fuse
- (3) Conductor
- (4) Inductor

Ans. 2

146. Pick the wrong answer in the context with rainbow

- (1) An observer can see a rainbow when his front is towards the sun

(2) Rainbow is a combined effect of dispersion refraction and reflection of sunlight

(3) When the light rays undergo two internal reflections in a water drop, a secondary rainbow is formed

(4) The order of colours is reversed in the secondary rainbow

Ans. 1

147. In a double slit experiment, when light of wavelength  $400 \text{ nm}$  was used, the angular width of the first minima formed as a screen placed  $1 \text{ m}$  away, was found to be  $0.2^\circ$ . What will be the angular width of the first minima, If the entire experimental apparatus is immersed in water ?

$(\mu_{\text{water}} = 4/3)$

(1)  $0.05^\circ$

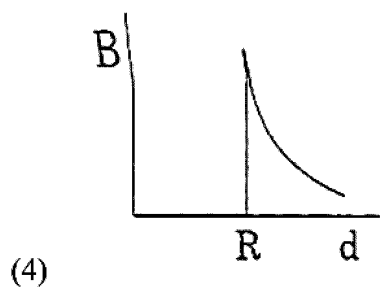
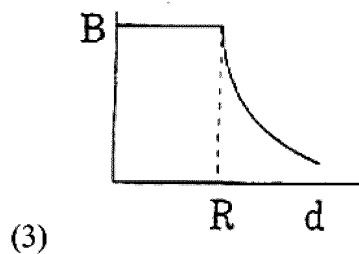
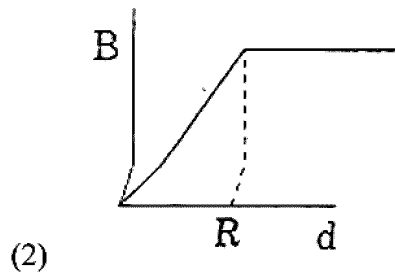
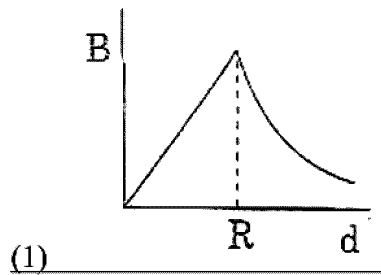
(2)  $0.1^\circ$

(3)  $0.266^\circ$

(4)  $0.15^\circ$

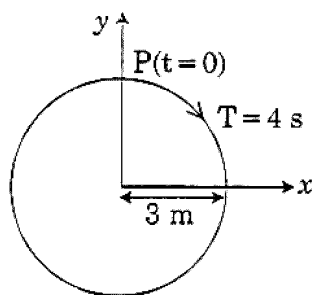
Ans. 4

148. A cylindrical conductor of radius  $R$  is carrying a constant current. The plot of the magnitude of the magnetic field,  $B$  with the distance,  $d$ , from the centre of the conductor, is correctly represented by the figure



Ans. 1

149. The radius of circle, the period of revolution, initial position and sense of revolution are indicated in the fig.



y- projection of the radius vector of rotating particle P is:

(1)  $y(t) = 3 \cos\left(\frac{3\pi t}{2}\right)$ , where y in m

(2)  $y(t) = 3 \cos\left(\frac{\pi t}{2}\right)$ , where y in m

(3)  $y(t) = -3 \cos 2\pi t$ , where y in m

(4)  $y(t) = 4 \sin\left(\frac{\pi t}{2}\right)$ , where y in m

Ans. 2

150. A copper rod of 88 cm and an aluminium rod of unknown length have their increase in length independent of increase in temperature. The length of aluminium rod is ( $\alpha_{Cu} = 1.7 \times 10^{-5} K^{-1}$  and  $\alpha_{Al} = 2.2 \times 10^{-5} K^{-1}$ )

(1) 88 cm

(2) 68 cm

(3) 6.8 cm

(4) 113.9 cm

Ans. 2

151. A mass m is attached to a thin wire and whirled in a vertical circle. The wire is most likely to break when

(1) The mass is at the lowest point

(2) Inclined at a angle of  $60^\circ$  from vertical

(3) The mass is at the highest point

(4) The wire is horizontal

Ans. 1



152. An electron is accelerated through a potential difference of 10,000 V. its de Broglie wavelength is (nearly)

$$(m_e = 9 \times 10^{-31} \text{ kg})$$

- (1)  $12.2 \times 10^{-14} \text{ m}$
- (2) 12.2 nm
- (3)  $12.2 \times 10^{-13} \text{ m}$
- (4)  $12.2 \times 10^{-12} \text{ m}$

Ans. 4

153. A block of mass 10 kg is in contact against the inner wall of a hollow cylindrical drum of radius 1m. The coefficient of friction between the block and the inner wall of the cylinder is 0.1. The minimum angular velocity needed for the cylinder to keep the block stationary when the cylinder is vertical and rotating about its axis, will be

- (1) 10 rad/s
- (2)  $10\pi \text{ rad/s}$
- (3)  $\sqrt{10} \text{ rad/s}$
- (4)  $\frac{10}{2\pi} \text{ rad/s}$

Ans. 1

154. A body weighs 200 N on the surface of the earth. How much will it weigh half way down to the centre of the earth?

- (1) 250 N
- (2) 100 N
- (3) 150 N
- (4) 200 N

Ans. 2

155. Average velocity of a particle executing SHM in one complete vibration is

- (1)  $\frac{A\omega^2}{2}$
- (2) zero
- (3)  $\frac{A\omega}{2}$
- (4)  $A\omega$

Ans. 2

156. Two particles A and B are moving in uniform circular motion in concentric circles of radii  $r_A$  and  $r_B$  with speed  $v_A$  and  $v_B$  respectively. Their time period of rotation is the same. The ratio of angular speed of A to that of B will be

- (1)  $r_B : r_A$
- (2) 1 : 1
- (3)  $r_A : r_B$
- (4)  $v_A : v_B$

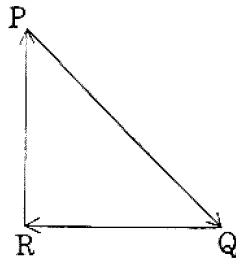
Ans. 2

157. The unit of thermal conductivity is

- (1)  $\text{WmK}^{-1}$
- (2)  $\text{W m}^{-1}\text{K}^{-1}$
- (3)  $\text{JmK}^{-1}$
- (4)  $\text{J m}^{-1}\text{K}^{-1}$

Ans. 2

158. A particle moving with velocity  $\vec{V}$  is acted by three force shown by the vector triangle PQR. The velocity of the particle will



- (1) remain constant  
 (2) change according to the smallest force  $\overline{QR}$   
 (3) Increase  
 (4) Decrease

Ans. 1

159. The displacement of a particle executing simple harmonic motion is given by  $y = A_0 + A \sin \omega t + B \cos \omega t$

Then the amplitude of its oscillation is given by:

- (1)  $\sqrt{A_0^2 + (A+B)^2}$   
 (2)  $A+B$   
 (3)  $A_0 + \sqrt{A^2 + B^2}$   
 (4)  $\sqrt{A^2 + B^2}$

Ans. 4

160.  $\alpha$  - particle consists of:

- (1) 2 electrons and 4 protons only  
 (2) 2 protons only  
 (3) 2 protons and 2 neutrons only  
 (4) 2 electrons, 2 protons and 2 neutrons

Ans. 3

161. In total internal reflection when the angle of incidence is equal to the critical angle for the pair of media in contact, what will be angle of refraction ?

- (1) Equal to angle of incidence  
 (2)  $90^\circ$   
 (3)  $180^\circ$   
 (4)  $0^\circ$

Ans. 2

162. In which of the following devices, the eddy current effect is not used ?

- (1) Electromagnet  
 (2) Electric heater  
 (3) Induction furnace  
 (4) Magnetic braking in train

Ans. 2

163. Which colour of the light has the longest wavelength ? <http://www.xamstudy.com>

- (1) Green  
 (2) Violet  
 (3) Red  
 (4) Blue

Ans. 3

164. A solid cylinder of mass 2 kg and radius 4 cm is rotating about its axis at the rate of 3 rpm. The torque required to stop after  $2\pi$  revolutions is

- (1)  $12 \times 10^{-4} Nm$   
 (2)  $2 \times 10^6 Nm$   
 (3)  $2 \times 10^{-6} Nm$   
 (4)  $2 \times 10^{-3} Nm$

Ans. 3

165. Ionized hydrogen atoms and  $\alpha$  - particles with same momenta enters perpendicular to a constant magnetic field B. The rate of their radii of their paths  $r_H : r_\alpha$  will be

- (1) 4 : 1
- (2) 1 : 4
- (3) 2 : 1
- (4) 1 : 2

Ans. 3

166. When an object is shot from the bottom of a long smooth inclined plane kept at an angle  $60^\circ$  with horizontal, it can travel a distance  $x_1$  along the plane. But when the inclination is decreased to  $30^\circ$  and the same object is shot with the same velocity, it can travel  $x_2$  distance. Then  $x_1 : x_2$  will be

- (1)  $1 : \sqrt{3}$
- (2)  $1 : 2\sqrt{3}$
- (3)  $1 : \sqrt{2}$
- (4)  $\sqrt{2} : 1$

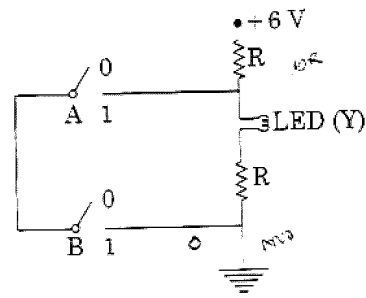
Ans. 1

167. A parallel plate capacitor of capacitance  $20\mu F$  is being charged by a voltage source whose potential is changing at the rate of  $3\text{ V/s}$ . The conduction current through the connecting wires, and the displacement current through the plates of the capacitor, would be respectively

- (1)  $60\mu A$ , zero
- (2) zero, zero
- (3) zero,  $60\mu A$
- (4)  $60\mu A$ ,  $60\mu A$

Ans. 4

168.



The correct Boolean operation represented by the circuit diagram drawn is

- (1) NAND
- (2) NOR
- (3) AND
- (4) OR

Ans. 1

169. A soap bubble, having radius of  $1\text{ mm}$ , is blown from a detergent solution having a surface tension of  $2.5 \times 10^{-2}\text{ N/m}$ . The pressure inside the bubble equals at a point  $Z_0$  below the free surface of water in a container. Taking  $g = 10\text{ m/s}^2$  density of water =  $10^3\text{ kg/m}^3$ , the value of  $Z_0$  is:

- (1) 1 cm
- (2) 0.5 cm
- (3) 100 cm
- (4) 10 cm

Ans. 1

170. A disc of radius  $2\text{ m}$  and mass  $100\text{ kg}$  rolls on a horizontal floor. Its centre of mass has speed of  $20\text{ cm/s}$ . How much work is needed to stop it?

- (1) 2 J
- (2) 1 J
- (3) 3 J
- (4) 30 kJ

Ans. 3

171. When a block of mass  $M$  is suspended by a long wire of length  $L$ , the length of the wire becomes  $(L+l)$ . The elastic potential energy stored in the extended wire is

(1)  $\frac{1}{2}Mgl$

(2)  $\frac{1}{2}MgL$

(3)  $Mgl$

(4)  $MgL$

Ans. 1

172. Two similar thin equi-convex lenses, of focal length  $f$  each, are kept coaxially in contact with each other such that the focal length of the combination is  $F_1$ . When the space between the two lenses is filled with glycerin (which has the same refractive index ( $\mu=1.5$ ) as that of glass) then the equivalent focal length is  $F_2$ . The ratio  $F_1:F_2$  will be

(1) 2:3

(2) 3:4

(3) 2:1

(4) 1:2

Ans. 4

173. The total energy of an electron in an atom in an orbit as  $-3.4$  eV. Its kinetic and potential energies are respectively

(1) 3.4 eV, -6.8 eV

(2) 3.4 eV, 3.4 eV

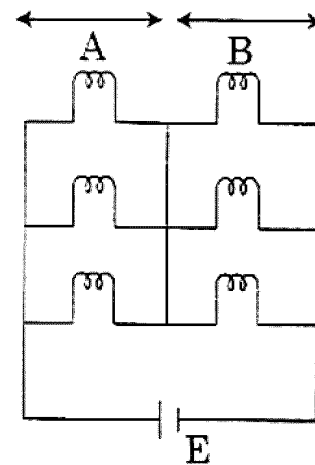
(3) -3.4 eV, -3.4 eV

(4)  $-3.4$  eV  $- 6.8$  eV

Ans. 1

174. Six similar bulbs are connected as shown in the figure with a DC source of emf  $E$ , and zero internal resistance.

The ratio of power consumption by the bulbs when (i) all are glowing and (ii) in the situation when two from section A and one from section B are glowing will be



(1) 1:2

(2) 2:1

(3) 4:9

(4) 9:4

Ans. 4

175. A 800 turn coil of effective area  $0.05$   $m^2$  is kept perpendicular to a magnetic field  $5 \times 10^{-5}$  T. When the plane of the coil is rotated by  $90^\circ$  around any of its coplanar axis in 0.1s, the emf induced in the coil will be

(1)  $2 \times 10^{-3}$  V

(2) 0.02V

(3) 2V

(4) 0.2V

Ans. 2

176. A small hole of area of cross-section  $2 \text{ mm}^2$  is present near the bottom of a fully filled open tank of height 2m. Taking  $g=10\text{m/s}^2$ , the rate of flow of water through the open hole would be nearly

- (1)  $2.23 \times 10^{-6} \text{ m}^3 / \text{s}$
- (2)  $6.4 \times 10^{-6} \text{ m}^3 / \text{s}$
- (3)  $12.6 \times 10^{-6} \text{ m}^3 / \text{s}$
- (4)  $8.9 \times 10^{-6} \text{ m}^3 / \text{s}$

Ans. 3

177. Two parallel infinite line charges with linear charge densities  $+\lambda C/m$  and  $-\lambda C/m$  are placed at a distance of  $2R$  in free space. What is the electric field midway between the two line charges?

- (1)  $\frac{\lambda}{\pi \epsilon_0 R} N/C$
- (2)  $\frac{\lambda}{2\pi \epsilon_0 R} N/C$
- (3) Zero
- (4)  $\frac{2\lambda}{\pi \epsilon_0 R} N/C$

Ans. 1

178. The speed of a swimmer in still water is 20 m/s. The speed of river water is 10 ms and is flowing due east. If he is standing on the south bank and wishes to cross the river along the shortest path, the angle at which he should make his strokes w.r.t north is given by:

- (1)  $60^\circ$  west
- (2)  $45^\circ$  west

(3)  $30^\circ$  west

(4)  $0^\circ$

Ans. 3

179. The work done to raise a mass  $m$  from the surface of the earth to a height  $h$ , which is equal to the radius of the earth is

- (1)  $\frac{1}{2} mgR$
- (2)  $\frac{3}{2} mgR$
- (3)  $mgR$
- (4)  $2 mgR$

Ans. 1

180. For a p-type semiconductor, which of the following statements is true?

- (1) Holes are the majority carriers and pentavalent atoms are the dopants
- (2) Electrons are the majority carriers and pentavalent atoms are the dopants
- (3) Electrons are the majority carriers and trivalent atoms are the dopants
- (4) Holes are the majority carriers and trivalent atoms are the dopants

Ans. 4